

# RUSSO

russo-group.com

# GROUP

innovative marketing

RESULT DRIVEN



# RUSSO GROUP SOLD \$120 MILLION IN 2015 - 2016

## AWARDED TOP PRODUCERS 2009 - PRESENT

### #1 SELLING TEAM IN JUPITER

Andrew and Milla Russo have been selling waterfront and luxury real estate in the Jupiter/Tequesta area for numerous years. They are committed to excellence and prioritize their customer's needs and best interest first and foremost. Andrew Russo was not just raised in Jupiter as a child, he was brought up in the Russo family real estate business, it is truly in his blood. Andrew has intimate knowledge of this market, of all the specific communities, of the waterfront, the beaches and the local waterways. He literally combines his expert local knowledge of real estate with in depth understanding of the area, lifestyle and history. Milla Russo is literally from the other side of the world. She was born in Russia, raised in New York/New Jersey and worked in Europe as an adult with a strong marketing background. Milla brings this Global perspective to the local real estate Jupiter area real estate market. Additionally, she has brought cutting edge, world class marketing to the Russo's real estate business. Milla is the perfect complement to Andrew's local roots (or perhaps it's the other way around!). Together they have become the top husband/wife real estate team in Northern Palm Beach County. Over the course of their careers as real estate broker/principal, as a developer and as real estate agents, Milla and Andrew Russo have closed \$1B in real estate and counting. Milla and Andrew have sold over \$120M of real estate in Northern Palm beach County in the last 18 months alone. They focus on numerous areas and communities in their specific market. They have sold numerous multi-million dollar homes along The Loxahatchee River, the Intracoastal and directly on the Atlantic ocean in Jupiter Inlet Colony and Jupiter Island. Additionally, they have sold million dollar plus homes in County Club Communities like Admirals Cove, Frenchman's Reserve, Seminole Landing, Old Palm and BallenIsles. They know the condo market along the beaches from Jupiter Island down to Jupiter and Juno Beach as well as selling prestigious condos which includes The Carlyle, The Claridge, Ocean Towers, Jupiter Yacht Club, Jupiter Ocean Grande and Ocean Royale. Andrew and Milla have earned an impeccable reputation as highly successful realtors with expert knowledge and integrity from both their clients and their fellow realtors.

Milla has brought high energy and chic design to their comprehensive and aggressive marketing strategies, which has showcased the properties they list in the best possible light to the largest possible pool of buyers. Andrew has quite literally grown up in the Jupiter real estate market, and knows this market, and its idiosyncrasies better than anyone. Together Andrew and Milla Russo combine their distinctively different backgrounds, knowledge and skill sets to give their customers the Best of Both Worlds when buying or selling real estate in Northern Palm Beach County.

ANDREW RUSSO



MILLA RUSSO

## SEPTEMBER 2010

In September 2010, VIP Properties of Distinction merged with Illustrated Properties. VIP Properties of Distinction was founded in 1987 by the Russo family. It was one of the top local independent realty companies in north Palm Beach County and south Martin county, specializing in selling Luxury Homes & Waterfront Properties with 4 location and 100 local agents. Illustrated Properties merged with VIP Properties in September 2010. Illustrated is also a family owned company since its foundation in 1975, and like VIP Properties, they have one of the best reputation in south Florida. This merger was a tremendous benefit for our clients for numerous reasons.

Superior marketing presence with world class Marketing Department.

Global Market Exposure as we are affiliated with Christies Great Estates, The Leading Real Estate Companies of the World, The Luxury Portfolio, and Luxury Real Estate, in addition to the hundreds of other real estate websites.

Russo Group have a full time administrative team, in-house marketing consultant, team leader, 4 buyer's agents, a full time real estate attorney on staff, and the best training programs in the industry.

For more information, click onto [www.IPRE.com](http://www.IPRE.com).



The Russo Group partnered up with Couture Homes to sell Harbor Place. Russo's premiere marketing strategies & international exposure helped Couture Homes sell out the luxurious 7 home waterfront community of Harbor Place in record time!

With over 40 years of combined luxury home building experience and as the recipient of 2013 America Best Builder, Couture Homes is the premier builder of luxury custom homes. Couture's partnership with the Russo Group was a natural fit. Both Andrew and Milla Russo specialize in the luxury waterfront market. They skillfully sell these exceptional homes and the lifestyles these homes represent. The Russo Group combines their intimate knowledge of the market and the properties they represent with world class marketing. This combination produces a high level of success and sales production which was on full display at Harbor Place!



## HARBOR PLACE



Harbor Place is the exclusive private enclave of 7 new custom waterfront homes located in Palm Beach Gardens along the Intracoastal Waterway. All 7 home sites boast of panoramic water views, boat dockage and spectacular settings by both land and sea. Harbor Place is one of the premier locations in all of south Florida, adjacent to The Bear's Club and overlooking natural preserve across the Intracoastal Waterway with deep water ocean access via the nearby Palm Beach and Jupiter Inlets. Additionally, it's only minutes away from some of the best beaches anywhere and the world class shopping and restaurants of the PGA Corridor. Only the finest luxury custom homes have been exclusively designed and constructed with the finest craftsmanship on these outstanding waterfront home sites. All 7 homes are custom built between 6,000—10,000 sq ft on 1/2 acre lot and unique to each of the 7 owners, and they all feature their own private dock, custom swimming pool with Lutron outdoor lighting, over-sized backyard living area, taking full advantage of the Florida waterfront life.

**ALL HOMES ARE SOLD OUT!!! | PRICES FROM 3.5M - 5M**

For more info, go to [HarborPlace.us](https://www.HarborPlace.us)



# RUSSO GROUP SOLD \$30M. IN SALES IN 2 YEARS IN JUPITER INLET COLONY

## JUPITER INLET COLONY

Surrounded by the Atlantic Ocean, Intracoastal Waterway and The Jupiter Inlet, Jupiter Inlet Colony is Jupiter Island's best kept secret. This incorporated town of 243 single family residences has it's own 24 hour police department and beach access for all homes. Jupiter Inlet Colony also offers it's residents a spectacular lifestyle with amenities such as, secluded and pristine beaches, great fishing and snorkeling, optional Beach Club membership, private marina and yacht club, and close proximity to world class shopping and restaurants.



- RUSSO GROUP SOLD :
- 202 Colony SOLD \$1.750K
  - 195 Shelter SOLD \$1.750K
  - 63 Colony SOLD \$1.350K
  - 183 Beacon SOLD \$1.325K
  - 190 Shelter SOLD \$1.19M
  - 183 Beacon SOLD \$1.1M
  - 66 Colony SOLD \$980K
  - 65 Colony SOLD \$950K
  - 176 Beacon SOLD \$810K
  - 188 Shelter SOLD \$788K
  - 171 Beacon SOLD \$765K
  - 45 Ocean SOLD \$750K



243 Ocean | SOLD \$4.750M



2 Ocean | SOLD \$3.55M



108 Lighthouse | SOLD \$3M



77 Lighthouse | SOLD \$2.95M

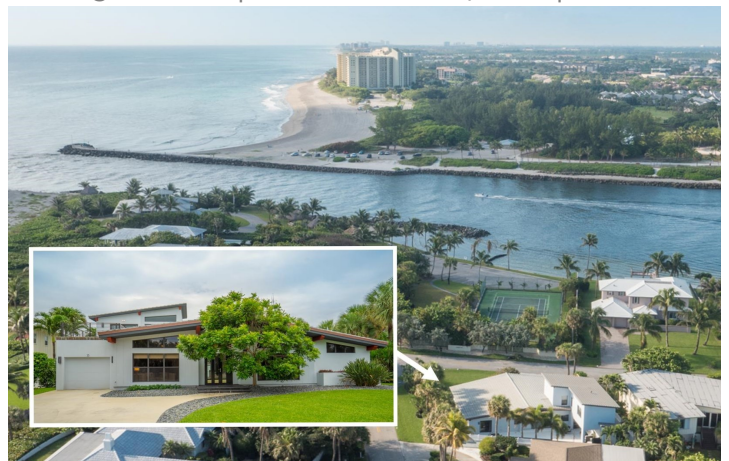
## RUSSO GROUP LISTINGS

188 Shelter | 5Bd New Construction | 3M



See Virtual Tour @ [188Shelter.Com](http://188Shelter.Com)

25 Lighthouse | Modern Masterpiece | \$1.895K



See Virtual Tour @ [25Lighthouse.Com](http://25Lighthouse.Com)



# GOLF & OTHER COMMUNITIES REPRESENTED BY RUSSOS

11601 Charisma | SOLD \$6.15M



506 Bald Eagle | SOLD \$2.5M



103 Schooner | SOLD \$2.65M



## BOTANICA NEW CONSTRUCTION

Russo Group represented New Urban Builder in selling last phase of 30 Single Family homes from \$400 - \$800K

SOLD \$20 Million



Russo Group represented buyers & seller in 8 -10 million in sales in past 2-3 years in these neighborhoods

## WHISPERING TRAILS



## HERITAGE OAKS



## WATERWAY VILLAGE





# WATERFRONT PROPERTIES

14646 Watermark Way | SOLD \$4.9M



18143 Ridgeview | SOLD \$1.065K



2 Island Rd | For Sale \$1.2M



5050 N. Ocean 1701 | SOLD \$2.7M



8810 SE Riverfront Terr | SOLD \$750K



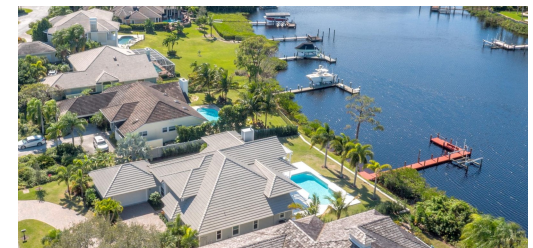
141 Pinehill Trail | SOLD \$1M



19112 Basin Ct | SOLD \$1.6M



18147 SE Ridgeview | SOLD \$1.305K



220 Celestial Way 3 | SOLD \$895K





8709 Compass Island | SOLD \$1.5M



5431 Pennock Point | SOLD \$5.4M

824 Lakeside | SOLD \$2.2M



277 River Drive | SOLD \$2.2M



19170 Waterway | SOLD \$2.5M

18372 SE Hermitage | SOLD \$1.350K



676 Hermitage | SOLD \$3M



COMING SOON | SEASON 2017



NEW CONSTRUCTION TO BE BUILT  
LUXURY WATERFRONT CONDOMINIUMS  
STARTING \$1.4M - \$2.5M  
[ADDISONSINGERISLAND.COM](http://ADDISONSINGERISLAND.COM)



107 Schooner | FOR SALE \$7.95M

2135 Porpoise Pt | FOR SALE \$3.95M



New Construction | FOR SALE \$TBD

New Construction | FOR SALE \$TBD

